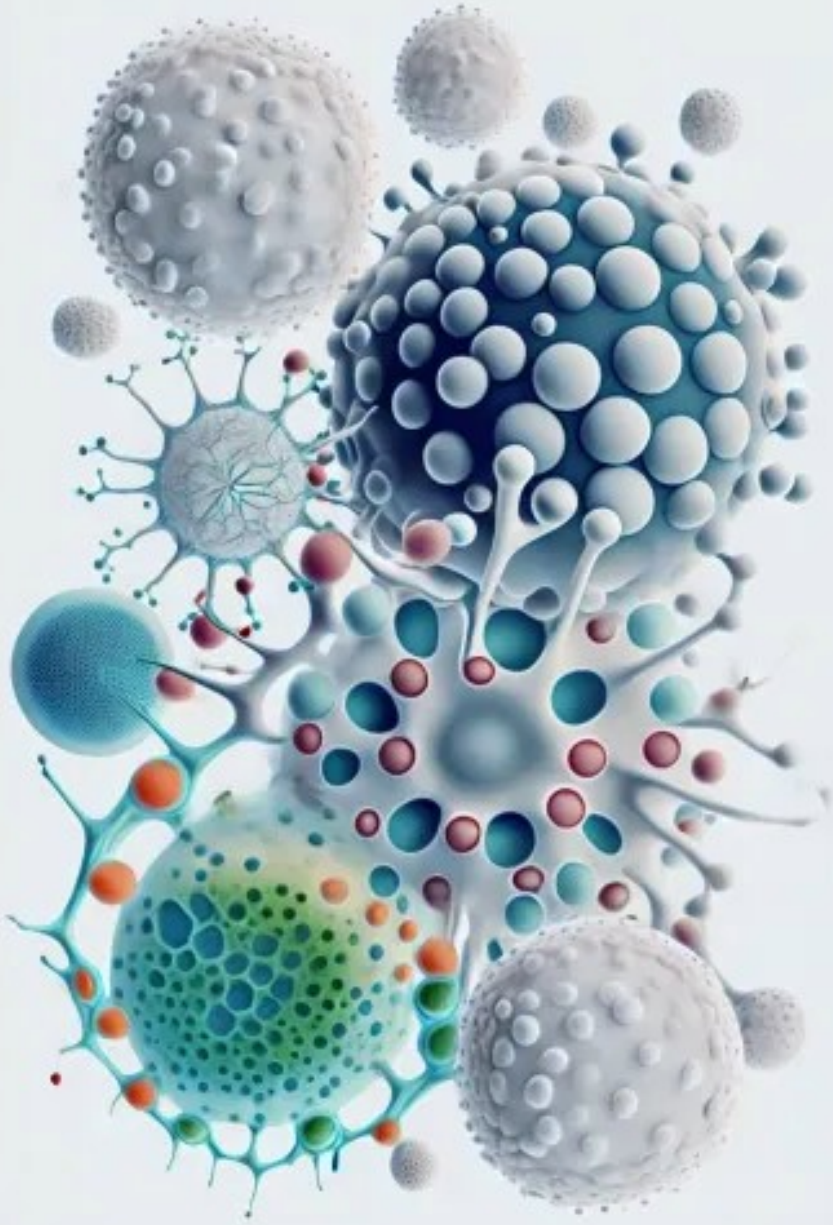


Biography

Dr. Rasha Msallam, a highly skilled immunologist with over 15 years of experience in dentistry, allergic diseases, infectious disease, and cancer, and recently the founder of NGig Consultancy. She is passionate about using her expertise in preclinical and translational immunology to help others. Her mission is to bridge scientists and clinicians for an innovative, inclusive, accessible, and patient's centered healthcare.

NGig Consultancy provides comprehensive immunological expertise to biomedical research projects, addressing gaps and working with stakeholders to deliver applicable results. We help projects move beyond the bench lab, from conceptualization to data analysis to publication, into application in healthcare.





Next Gen of Immunology Consultancy (NGI g)

Transform Ideas Into Deliverable Goals in
Biomedical research and healthcare

Pain Points



Strategy development & training

Lack of expertise in experimental design, strategy planning, project management, and cutting-edge biomedical research technology development for personalized medical care



Translational application

Identify the scope of interests in fast-paced and competitive medical innovation, such as new biomarkers and novel therapies.



From bench to bedside toward the market

Lost connection between the academia and Industry in medical research (Market research, lead finder, etc..)



It is not about what we do, It is about what we do better..

Key capabilities

Experimental Consulting

- Implement published or de novo preclinical murine experimental strategies for cancer, infectious diseases, autoimmune diseases (EAE), and allergic diseases (Asthma and skin allergies).
- Immunological interpretation of in-vitro and ex-vivo assays.
- Analyzing multiplex-IF images and developing quantification macros.
- Biological assessment of multi-omics data.

Educational Consulting

- Tailoring educative courses of general immunology or for a specific topic of interest.
- Training staffs to use flow cytometry and analyzing data.
- Reviewing manuscripts and grants.

Post-Experimental Consulting

- Analyzing high-dimensional flow cytometry data.
- Immunological interpretation of in-vitro and ex-vivo assays.
- Analyzing multiplex-IF images and developing quantification macros.
- Biological assessment of multi-omics data.

Customized innovation Consulting

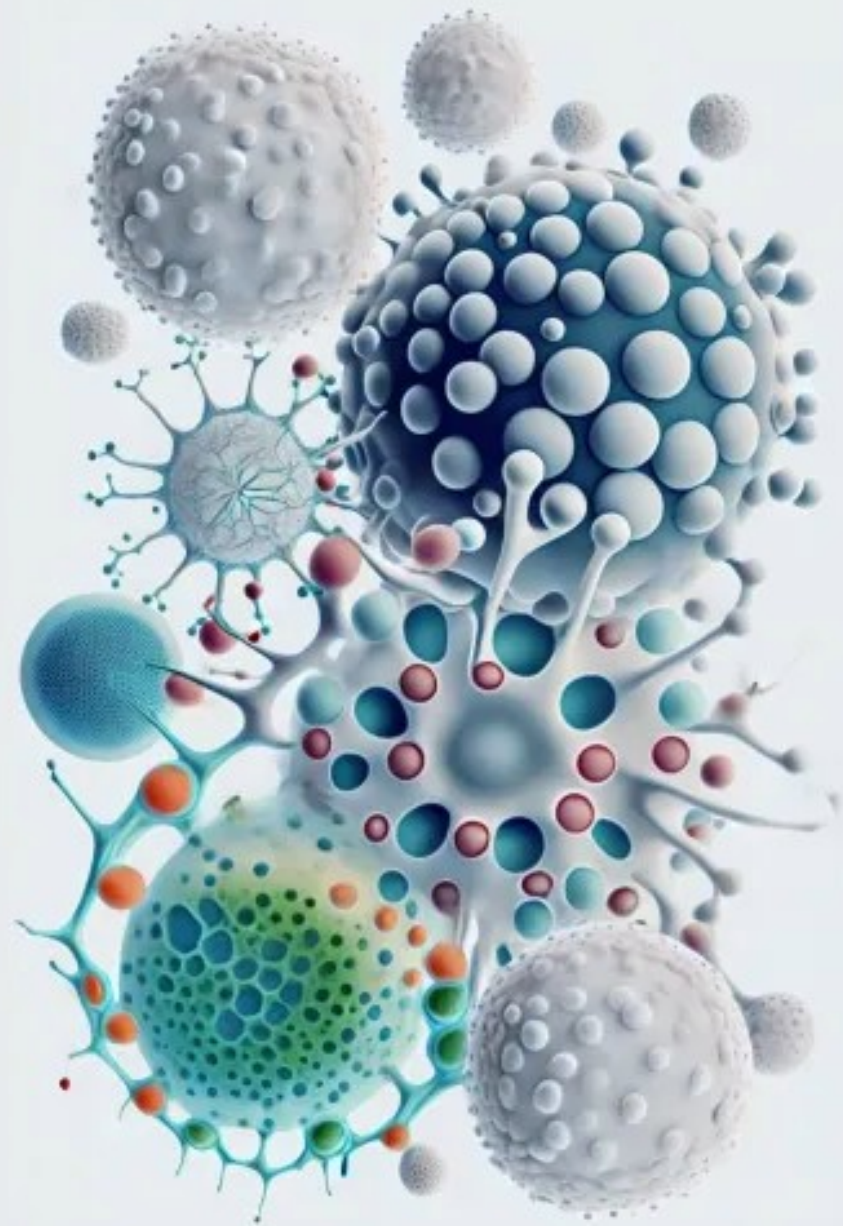
Contact us to address your need in attractive packages.



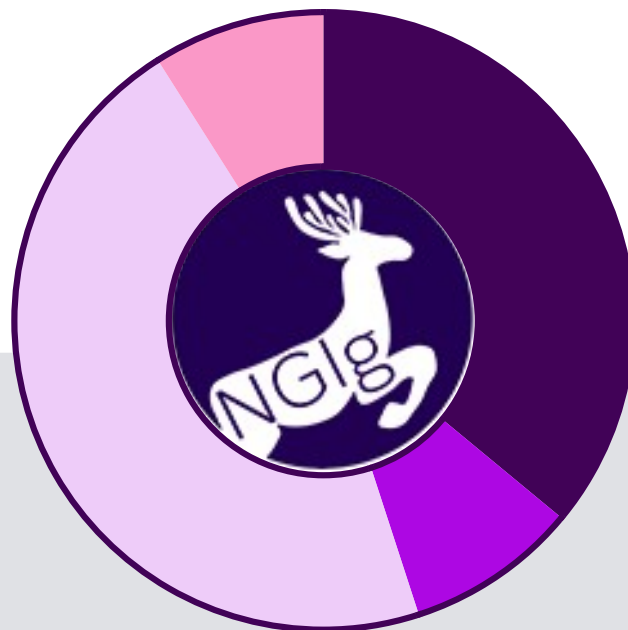
They Trust NGLg



And more..



Clients' Affiliation

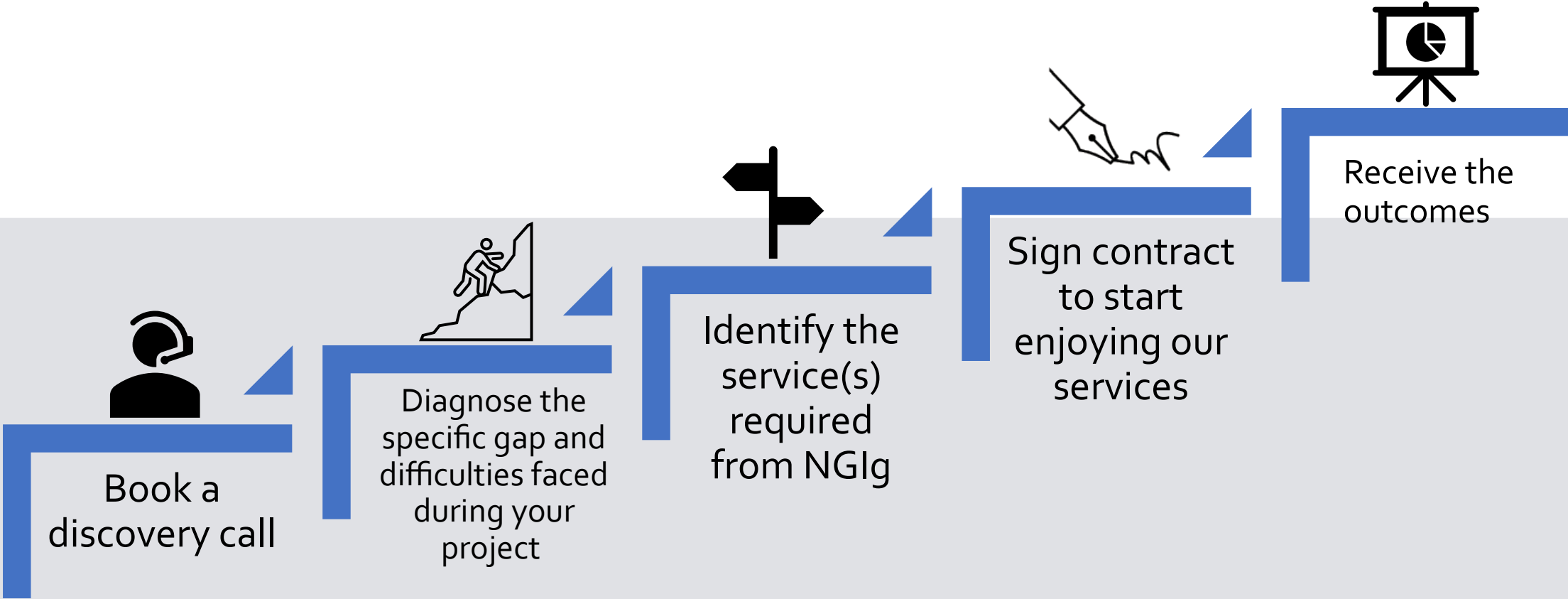


- 38% Academia
- 9% Scientific communication
- 46% Industry/Start-up
- 9% NGO

Since July 2022



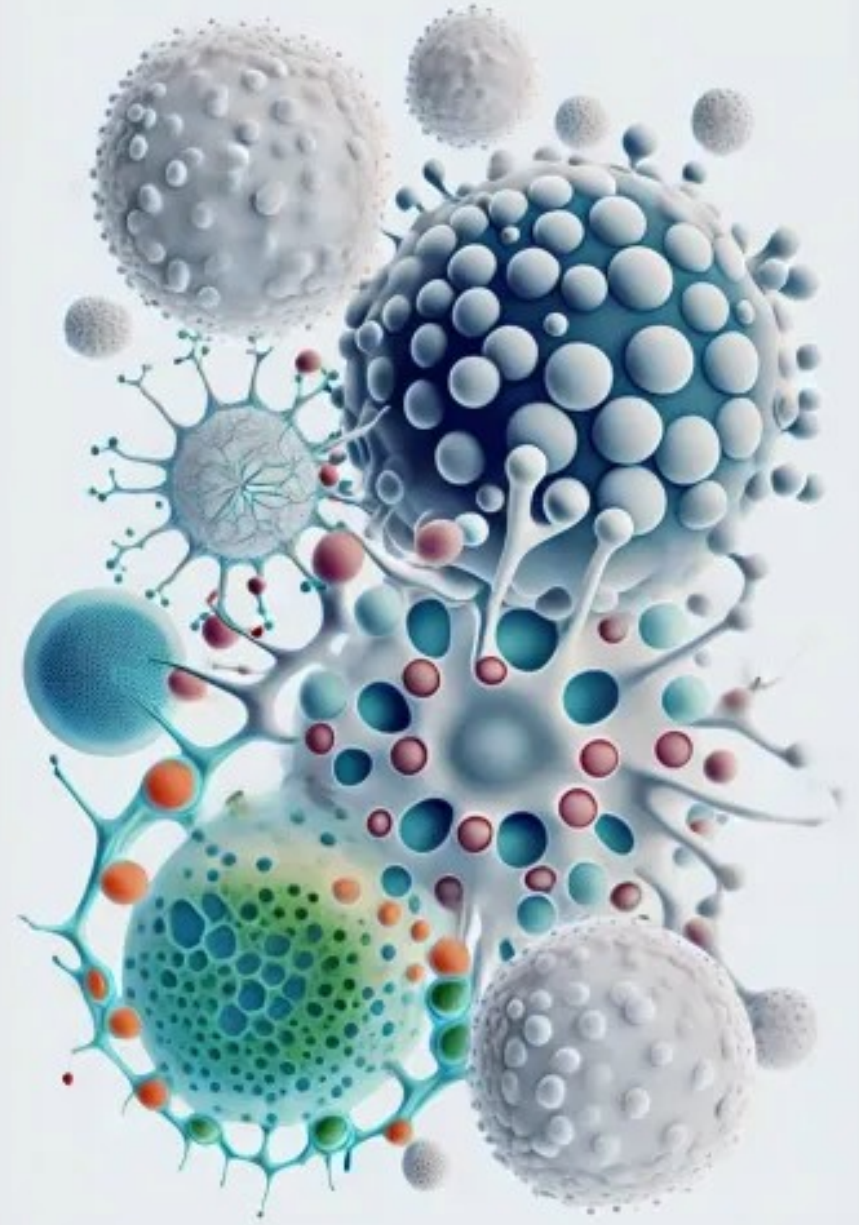
Framework



Contact us



Rasha_msallam@nextgenig.com





Testimonials

“

I have the pleasure of working with Rasha as an Analyst at Science Feedback. Rasha consistently delivered accurate reviews of videos related to medical and health topics, helping to identify and correct misinformation. Rasha's communication skills were notably clear and concise, providing a valuable contribution to our mission of countering health misinformation. It was a pleasure to work alongside her.

”



**Dr. Emma Kay Richardson
(Research Fellow).**

“

Dr. Msallam is a highly experienced and extremely knowledgeable scientist. Her expertise on cell biology and in vivo immunology and immuno-oncology studies has been very valuable to my project. Dr. Msallam makes herself readily available to provide any input or assistance required and is extremely helpful and personable. I have enjoyed working with her, and I would highly recommend NGIg Consulting's services to other research scientists.

”

“

Rasha and NGIg have been an invaluable and outstanding consultancy for my laboratory team and myself as an academic clinician scientist oncologist . Rasha has provided very deep, insightful and constructive guidance to help us shape and move a major research project particularly focusing on novel therapeutic immuno-oncology and its translational dimension. Rasha is a true domain expert in the scientific method. She has been very responsive, very pleasant and it has been a real pleasure and privilege to work with her.

”



**Dr Toh Han Chong
Deputy CEO (Strategic Partnerships)
National Cancer Centre Singapore
Professor Duke NUS Medical School**



**Emmanuel Vincent, PhD
Founder & Executive Director
Science Feedback**



Examples of Topics of Expertise & Publications

- #Meyloid cells
- #Mast Cells
- #Adaptive Immune System
- #Tumor Microenvironment
- #Nuclear Medicine
- #Cellular Crosstalk
- #Allergy
- #Infections
- #In-vivo
- #Organoids
- #Autoimmune diseases



Case Study #1

Scope: Unravel The Immunity of Pediatric Allergies “The Story Starts in The Womb” (Period 24 months)

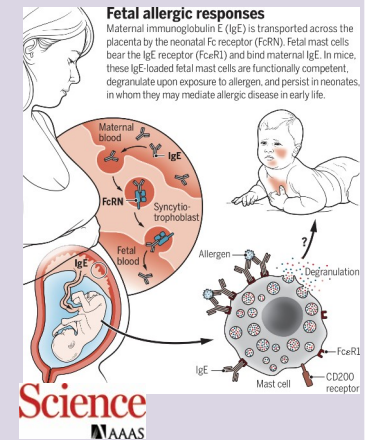
Job to be done

- Using novel genetic technologies such as RNA sequencing (scRNA).
- Establishment of bio-bank of fetal tissues in collaboration with the ministry of health in Singapore and the clinicians at the KK Women's and Children's Hospital
- Development of state-of-art integrating framework to analyze metadata and its biological significance in time-saving manner.

Solutions

- Developing a preclinical model to identify the mechanism of developing allergic diseases in newborn.
- Establish a library of novel bio-markers as an early-detection assessment of allergic diseases.
- Identify the environmental factors in developing asthma and skin allergies.

Results



- ✓ My contribution led to Designing a framework to investigate the link of developing atopic dermatitis in children born for atopic mothers. The collaboration was funded by Telethon Kids Institutes(Australia) (AUD 100,000) for a proof-of-concept study.



Case Study #2

Scope: Development of biomarkers for an accurate and less invasive management of Breast cancer (Period: 6 months)

Job to be done

- Correlation of the blood tests, clinical history, and the pathology reports.
- Developing a personalized metrics for an accurate diagnosis.
- Applied analytical methods, in collaboration with computer scientists to develop an accurate predictive diagnostic tools in breast cancer

Solutions

- Establishing a pipeline to process biological samples.
- Training bioinformaticians to understand the biology of breast cancer and collaborate to translate the statistics outcomes into applicable
- Identify the environmental factors in developing asthma and skin allergies.

Results

- The delivered results helped to:
- ✓ Build a reference framework for clinicians and to apply personalized therapy instead of standard care protocols.
 - ✓ The potential outcomes will decrease the unnecessary surgeries and identify a specific immunotherapy to be applied with minimal toxicity and undesirable side effects.

Case Study #3

Scope: Discovery of novel and quantitative imaging agents to interrogate inflammation in brain, cancer, and infectious disease (ongoing)

Job to be done

- Collaboration with biochemists, virologists, and clinicians to identify the probe of interests.
- Evaluate the radioactivity and the potential toxicity of the developed probes.
- Integrating cutting-edge technology in proteomics

Solutions

- Establishing a pipeline to process biological samples.
- Training bioinformaticians to understand the biology of breast cancer and collaborate to translate the statistics outcomes into applicable
- Identify the environmental factors in developing asthma and skin allergies.

Results

The delivered results helped to:

- ✓ Publication of 3 articles, and another 3 papers are in preparation. NGIg is the solely consultant for all these papers.
- ✓ The obtained results helped to acquire phase 2 of a governmental grant (SGD 10 million)
- ✓ Developing an immuno-monitoring pipeline for potential integration in the oncology department at Singaporean general hospital (SGH)
- ✓ The collaboration is still ongoing with patents and publications in the pipeline

